

PART OF N.E. 1/4 OF SEC. 28, T.7N., R.1E., S.L.B. & M.
EDEN HILLS SUBDIVISION NO. 2

70

TAXING UNIT 28

IN WEBER COUNTY

PREFIX 22-070

SCALE 1"=100'

EXCEPT WHERE OTHERWISE SHOWN
 ALL LOTS OWNED BY
 HOWARD E. HALDENAN
 AS TRUSTEES ET AL

SEE PAGE 73

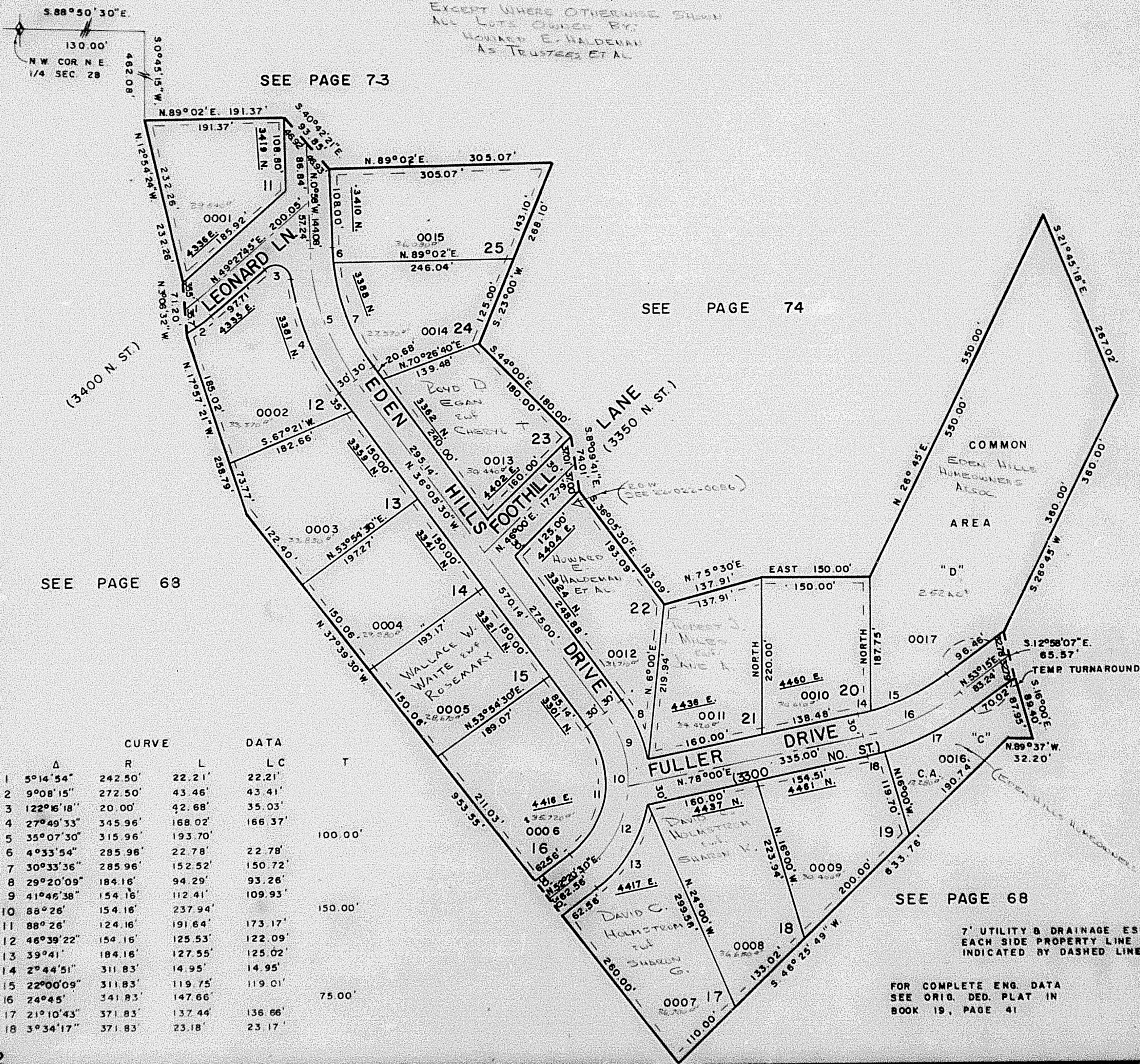
SEE PAGE 74

SEE PAGE 68

SEE PAGE 68

7' UTILITY & DRAINAGE ESMTS
 EACH SIDE PROPERTY LINE AS
 INDICATED BY DASHED LINES

FOR COMPLETE ENG. DATA
 SEE ORIG. DED. PLAT IN
 BOOK 19, PAGE 41



| | Δ | R | L | LC | T |
|----|------------|---------|---------|---------|---------|
| 1 | 5°14'54" | 242.50' | 22.21' | 22.21' | |
| 2 | 9°08'15" | 272.50' | 43.46' | 43.41' | |
| 3 | 122°16'18" | 20.00' | 42.68' | 35.03' | |
| 4 | 27°49'33" | 345.96' | 168.02' | 166.37' | |
| 5 | 35°07'30" | 315.96' | 193.70' | | 100.00' |
| 6 | 4°33'54" | 285.96' | 22.78' | 22.78' | |
| 7 | 30°33'36" | 285.96' | 152.52' | 150.72' | |
| 8 | 29°20'09" | 184.16' | 94.29' | 93.26' | |
| 9 | 41°46'38" | 154.16' | 112.41' | 109.93' | |
| 10 | 88°26' | 154.16' | 237.94' | | 150.00' |
| 11 | 88°26' | 124.16' | 191.64' | 173.17' | |
| 12 | 46°39'22" | 154.16' | 125.53' | 122.09' | |
| 13 | 39°41' | 184.16' | 127.55' | 125.02' | |
| 14 | 2°44'51" | 311.83' | 14.95' | 14.95' | |
| 15 | 22°00'09" | 311.83' | 119.75' | 119.01' | |
| 16 | 24°45' | 341.83' | 147.66' | | 75.00' |
| 17 | 21°10'43" | 371.83' | 137.44' | 136.66' | |
| 18 | 3°34'17" | 371.83' | 23.18' | 23.17' | |